

# WELCOME HOME TO

THE VILLAGE AT  
WETHERSFIELD  
*Apartments*

MANAGED BY SCULLY COMPANY



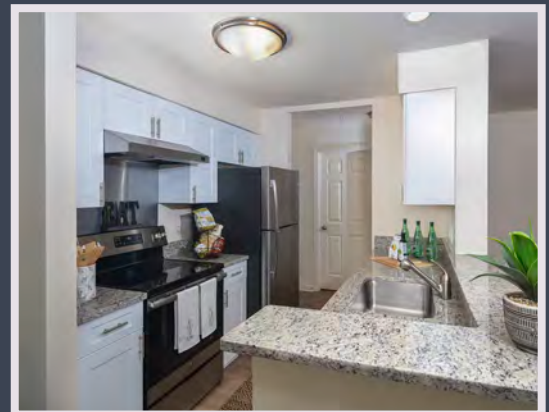
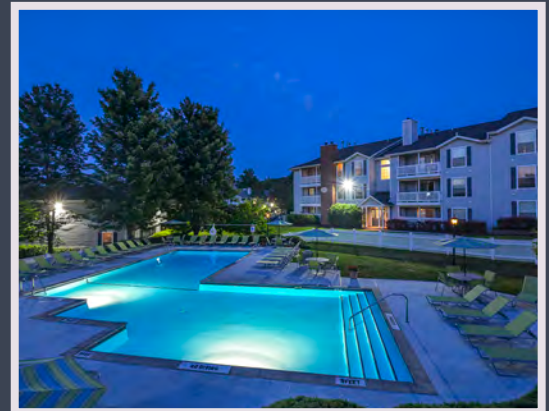
## Welcome to the best in carefree apartment living.

Nestled in a suburb of Hartford, The Village at Wethersfield is a quaint residential community convenient to fine dining, shopping, entertainment and major highways. With 20 acres of lush green landscaping, you'll experience the feeling of being home the moment you enter The Village at Wethersfield.

Every apartment home here is designed with you in mind to assure you experience the quality and comfort you expect. Our on site professional management team is dedicated to providing impeccable service to our residents. Our 24 hour emergency maintenance program promises to meet any service request or maintenance need and will always go the extra mile to ensure total satisfaction.

Join your family, friends and neighbors in a community which you can be proud and where our number one goal is taking care of YOU!

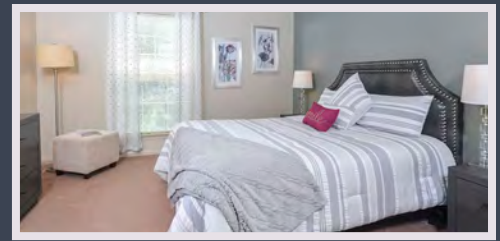
The Village at Wethersfield is an apartment community professionally managed by Scully Company.



Call now to schedule appointment  
**844-806-9917**

79 Village Drive  
Wethersfield, CT 06109  
vawapartments.com





## Apartment Features

- Fully Renovated Kitchens and Baths\*
- Light St. Cecilia Granite Countertops\*
- Baltic Oak Luxury Plank Flooring\*
- Fireplace\*
- Spacious Closets
- Window Treatments
- Private Patio or Balcony
- Washer and Dryer in All Apartments
- Vaulted Ceilings\*
- Water Saving Shower Heads
- Built-In Entertainment Center\*
- Garbage Disposal
- Frost free refrigerator with Ice Maker
- Cable Ready
- High speed Internet Access Available

\*in select units

## Community Features

- Multi-Sport Court
- Bark Park for Dogs
- Heated Pool
- Cedar Sauna
- 24-Hour Fitness Center
- Pets Welcome

Application Fee: \$\_\_\_\_\_ per applicant

Reservation Fee (Non-refundable): \$\_\_\_\_\_

Non-Refundable Pet Fee (Maximum of 2 pets per apartment. Breed restrictions apply. Max weight limit of 50 lbs)  
\$\_\_\_\_\_ for 1 pet, \$\_\_\_\_\_ for 2 pets

Monthly Pet Rent: \$\_\_\_\_\_ for 1 pet, \$\_\_\_\_\_ for 2 pets

Monthly Water & Sewage Fee:

\$\_\_\_\_\_ for 1 bed, \$\_\_\_\_\_ for 2 bed

*Please Visit the Leasing Office for Updated Rates and Fees.  
Prices are Subject To Change Equal Housing Opportunity Restrictions Apply.*



**1 BEDROOM:** 1 Bed/1 Bath • 765 to 886 sq ft

Today's Date \_\_\_\_\_ Today's Rent \_\_\_\_\_



**2 BEDROOM:** 2 Bed/2 Bath • 1,210-1,240 sq ft

Today's Date \_\_\_\_\_ Today's Rent \_\_\_\_\_

Renderings are an artist's conception and are intended only as a general reference. Features, materials, finishes and layouts may be different than shown.



See more floorplans online at  
**vavapartments.com**