

WELCOME HOME TO

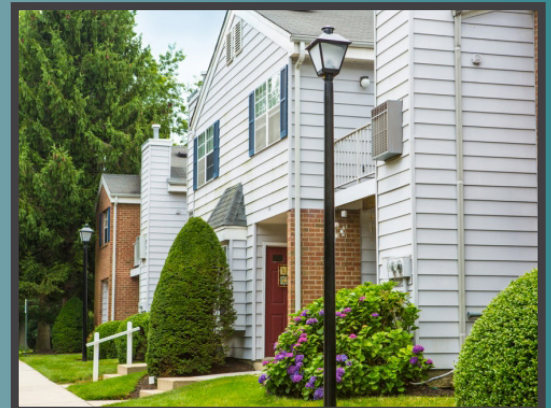


Suburban Location. City Convenience.

Nestled away in one of New Jersey's most sought after suburban neighborhoods lies your new HOME. The location makes our Apartments the perfect getaway from the hustle and bustle of the city life. The convenience lies just outside your door with a great selection of shopping malls, grocery stores, dining and entertainment, all within minutes of home. Commuting to work is easy with accessibility to several major arteries such as Route 38 and Interstate 295 (exit 40).

Our floor plans were carefully designed with spacious living areas and private entries with access to patios or balconies for additional relaxation.

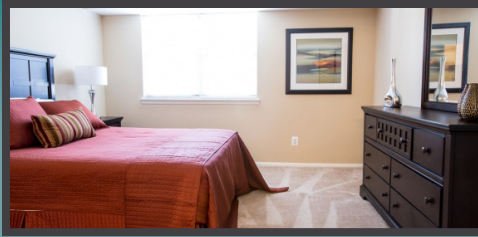
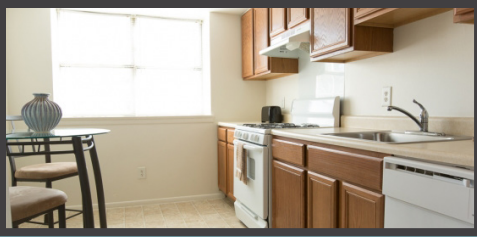
Live your life here, at Stirling Court Apartments. Proudly managed by **Scully Company**, managing communities people are proud to call home.



Call now to schedule appointment
844-504-7980

113A Hastings Way
Mount Laurel, NJ 08054
livestirlingcourt.com





Apartment Features

- Air Conditioning with Individual Climate Control
- Window Treatments
- Private Entrance
- Private Patio or Balcony
- Wall-to-wall Carpet
- Individual Washer/Dryer
- Generous Closets
- Dishwasher
- Garbage Disposal
- Remodeled Eat-in Kitchen

Community Features

- 24-Hour Emergency Maintenance
- On-Site Property Management
- Quiet location with Beautiful Landscape
- Close to Public Transportation
- Pets Welcome!
- Tennis Courts
- Barbeque Grill Area



1 BEDROOM: 1 Bed/1 Bath • 866 sq ft

Today's Date _____ Today's Rent _____



1 BEDROOM DEN: 1 Bed/1 Bath w/den • 957 sq ft

Today's Date _____ Today's Rent _____

Application Fee: **\$50** per applicant

Reservation Fee (Refundable upon move in): **\$250**

Monthly Pet Rent: **\$20 for cats, \$40 for dogs**

Non-Refundable Pet Fee (Maximum 2 pets Per Household): **\$300**

Prices are Subject To Change Equal Housing Opportunity Restrictions Apply.



See more floorplans online at
livestirlingcourt.com