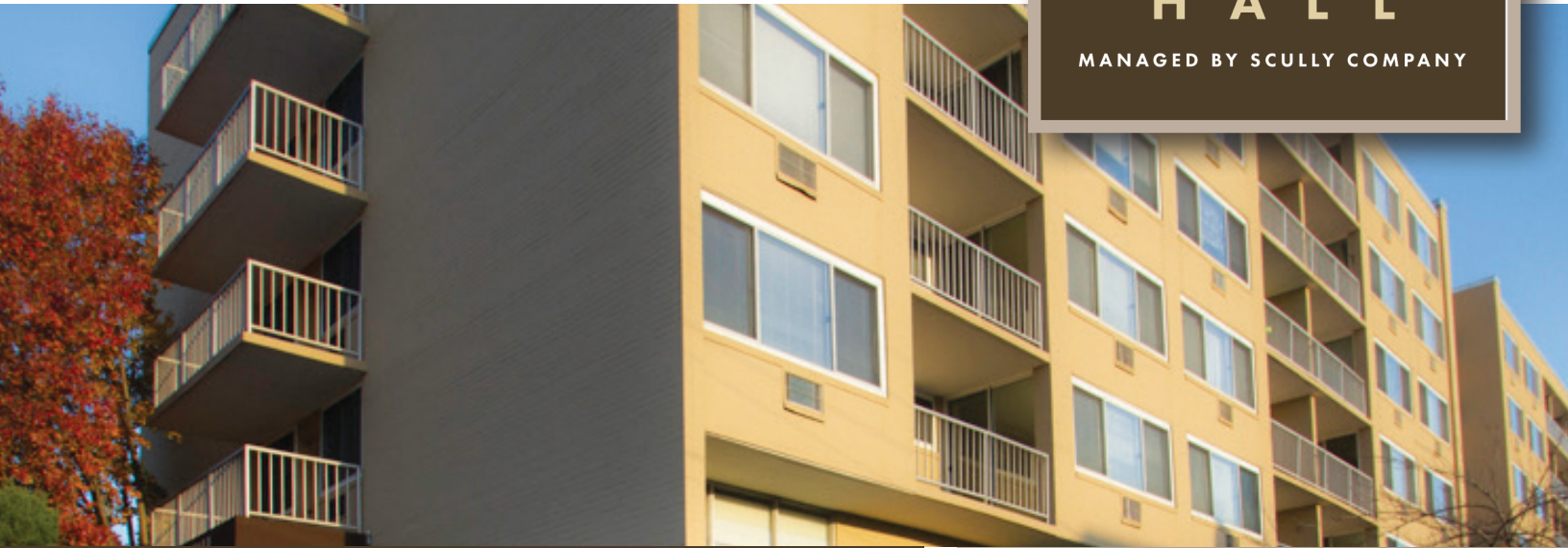


WELCOME HOME TO

HAMILTON HALL

MANAGED BY SCULLY COMPANY



Live the Lifestyle You Deserve

Our studio, 1 or 2 bedroom apartment homes offer features and amenities for easy living. Conveniently located in the suburbs of Norristown, minutes from the Montgomery County Court House, Plymouth Meeting Office Parks and King of Prussia, Hamilton Hall offers easy access for both work, play and not to mention the best shopping the area has to offer. If spotless buildings, short commutes, and convenience are important to you...look no further.

Tour one of our beautifully appointed apartment homes and you'll see why living here is an experience. Live the lifestyle and celebrate the location of Hamilton Hall, an apartment community professionally managed by **Scully Company**. Managing Communities people are proud to call home.



Call now to schedule appointment
844-530-6736

449 Hamilton Street
Norristown, PA 19401
www.scullycompany.com


Scully
COMPANY



Apartment Features

- Bright, Sunny Apartments
- New Upgraded Kitchens
- Heat and Hot Water Included
- Air Conditioning
- Individual Climate Control
- Controlled Access
- Large Private Balcony
- High Speed Internet Access Available
- Cable Ready

Community Features

- Excellent Location
- Controlled Access
- Close to Public Transportation
- Elevator
- Mail Station in Lobby
- Individual Storage Lockers
- On-Site Laundry Facilities
- 24 Hour Fitness Center
- First Floor Retail and Businesses
- Package Receiving
- Dedicated On-Site Management and Maintenance Team
- Convenient to Plymouth Meeting and King of Prussia Malls
- Cats Welcome (with fee)

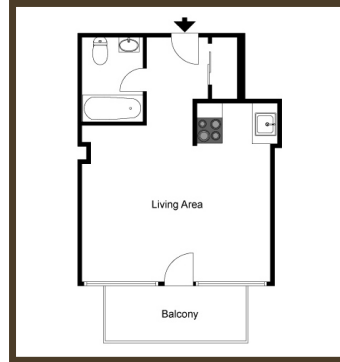
Application Fee: **\$35** per applicant

Reservation Fee (Refundable upon move in): **\$75**

Non-Refundable Pet Fee (per cat) **\$150**

Monthly Pet Rent: **\$15** per pet

Prices are Subject To Change Equal Housing Opportunity Restrictions Apply.



STUDIO

0 Bedroom/1 Bath
350 sq ft

Today's Date _____

Today's Rent _____



TWO BEDROOM HAMILTON

2 Bedroom/1 Bath
815 sq ft

Today's Date _____

Today's Rent _____

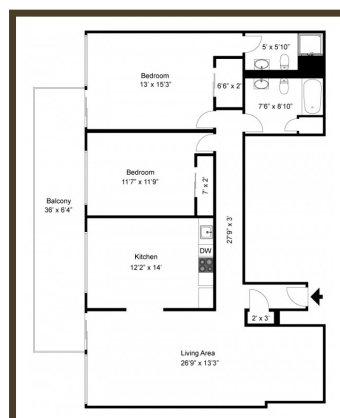


TWO BEDROOM FRONT

2 Bedroom/1 Bath
879 sq ft

Today's Date _____

Today's Rent _____



TWO BEDROOM DELUXE

2 Bedroom/2 Bath
1160 sq ft

Today's Date _____

Today's Rent _____



See more floorplans online at
www.scullycompany.com