

WELCOME HOME TO

— THE —
Hathaway House

MANAGED BY SCULLY COMPANY



Now you can move up without moving away! Come to Hathaway House...the smart alternative to Center City living.

HATHAWAY HOUSE is the only choice for those desiring an elegant lifestyle with comfort and convenience in a prestigious atmosphere. This fashionable highrise overlooking Fairmount Park is only 12 minutes from Center City, 5 minutes from City Line Avenue and minutes from downtown Manayunk.

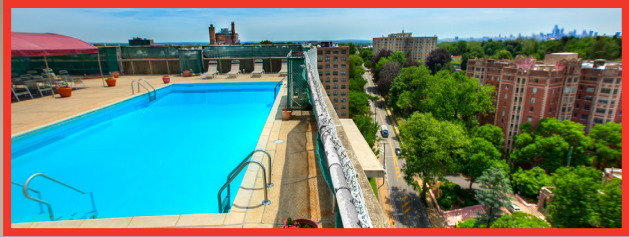
Tour one of our Studio, 1, 2 or 3 bedroom apartment homes and you'll see why living here is an experience... Live the lifestyle and celebrate the location of Hathaway House, an apartment community professionally managed by Scully Company. Managing Communities people are proud to call home.



Call now to schedule appointment
844-532-4914

515 W. Cheltenham Avenue
Philadelphia, PA 19144
livehathaway.com





Apartment Features

- Individual Climate Control
- Spacious Closets
- Generous Sized, Private Balconies
- On-Site, Professional Property Management
- Fully Equipped Kitchen Eat in Kitchen
- Cable Ready
- High Speed Internet Access Available

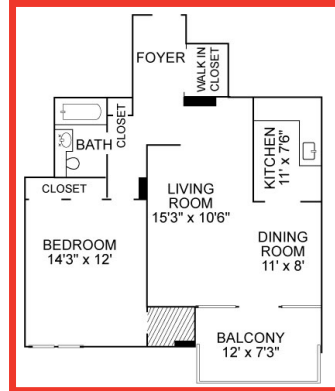
Community Features

- 24-Hour Emergency Maintenance
- Business Center
- On-Site Laundry Facilities
- On-Site Property Management
- Outdoor, Covered and On Street Parking Available
- 24-Hour Lobby Attendants
- Rooftop Pool and Sun Terrace

Application Fee: \$45 per applicant

Reservation Fee
(Applied toward first month's rent): \$125

Prices are Subject To Change Equal Housing Opportunity Restrictions Apply.

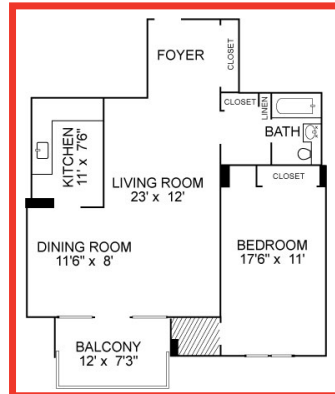


ONE BEDROOM JUNIOR

1 Bedroom/1 Bath
800 sq ft

Today's Date _____

Today's Rent _____

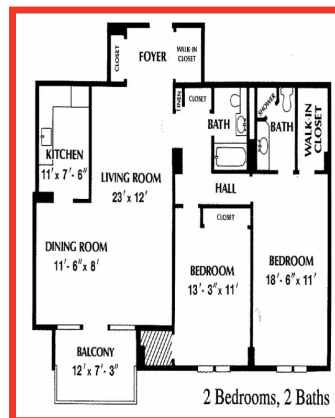


ONE BEDROOM DELUXE

1 Bedroom/1 Bath
919 sq ft

Today's Date _____

Today's Rent _____



TWO BEDROOM

2 Bedroom/2 Bath
1238 sq ft

Today's Date _____

Today's Rent _____



THREE BEDROOM

3 Bedroom/2 Bath
1506 sq ft

Today's Date _____

Today's Rent _____



See more floorplans online at
livehathaway.com