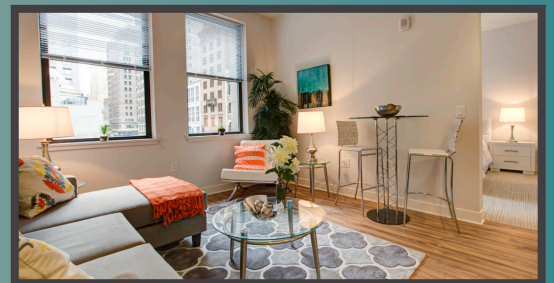


WELCOME HOME TO Avenir ON FIFTEENTH



Beautiful, brand new Center City Philadelphia apartments with innovative, efficiently designed spaces that take advantage of every square inch for your comfort and convenience. Located just a few blocks from Rittenhouse Square.

This modern approach allows us to make your wish list achievable – not as a dream in the future – but right now – when you need it most. Avenir is an apartment community professionally managed by **Scully Company**.



Call now to schedule appointment
877-931-8252

42 South 15th Street
Philadelphia, PA 19102
avenirphilly.com





Apartment Features

- Walk Score of 100
- Center City Views
- Washer and Dryer in Unit
- Unique Layouts
- Smart Thermostats
- Stainless Steel Appliances
- Quartz Counter Tops

Community Features

- Fitness Center & ScullyFit Cardio Experience
- Screening Room
- Conference Room & Think Suites
- Resident Lounge
- Indoor Bike Storage & Cycle Stations
- Individual Storage
- 24 Hour Concierge with Package Service
- Close Proximity to Transportation Hub



STUDIO:
 0 Bedroom
 1 Bath
 424 sq ft

Today's Date: _____

Today's Rent: _____



1 BEDROOM GRAND:
 1 Bedroom
 1 Bath
 619 sq ft

Today's Date: _____

Today's Rent: _____



2 BEDROOM:
 2 Bedroom
 2 Bath
 1,049 sq ft

Today's Date: _____

Today's Rent: _____

Application Fee: \$50 per applicant
 Reservation Fee: \$500
 Storage Facilities: \$35-\$50/mth
 Monthly Pet Rent: \$40
 Non-Refundable Pet Fee: \$350

Prices are Subject To Change Equal Housing Opportunity Restrictions Apply



See more floorplans online at
avenirphilly.com